

DATE OF FIRM: 08-18-2014

SCALE: 1"=30'

JOB No. 20-0032M-EL

BASE FLOOD ELEVATION: 12

REVISÉ : K.F.K

COMMUNITY NUMBER: 120055

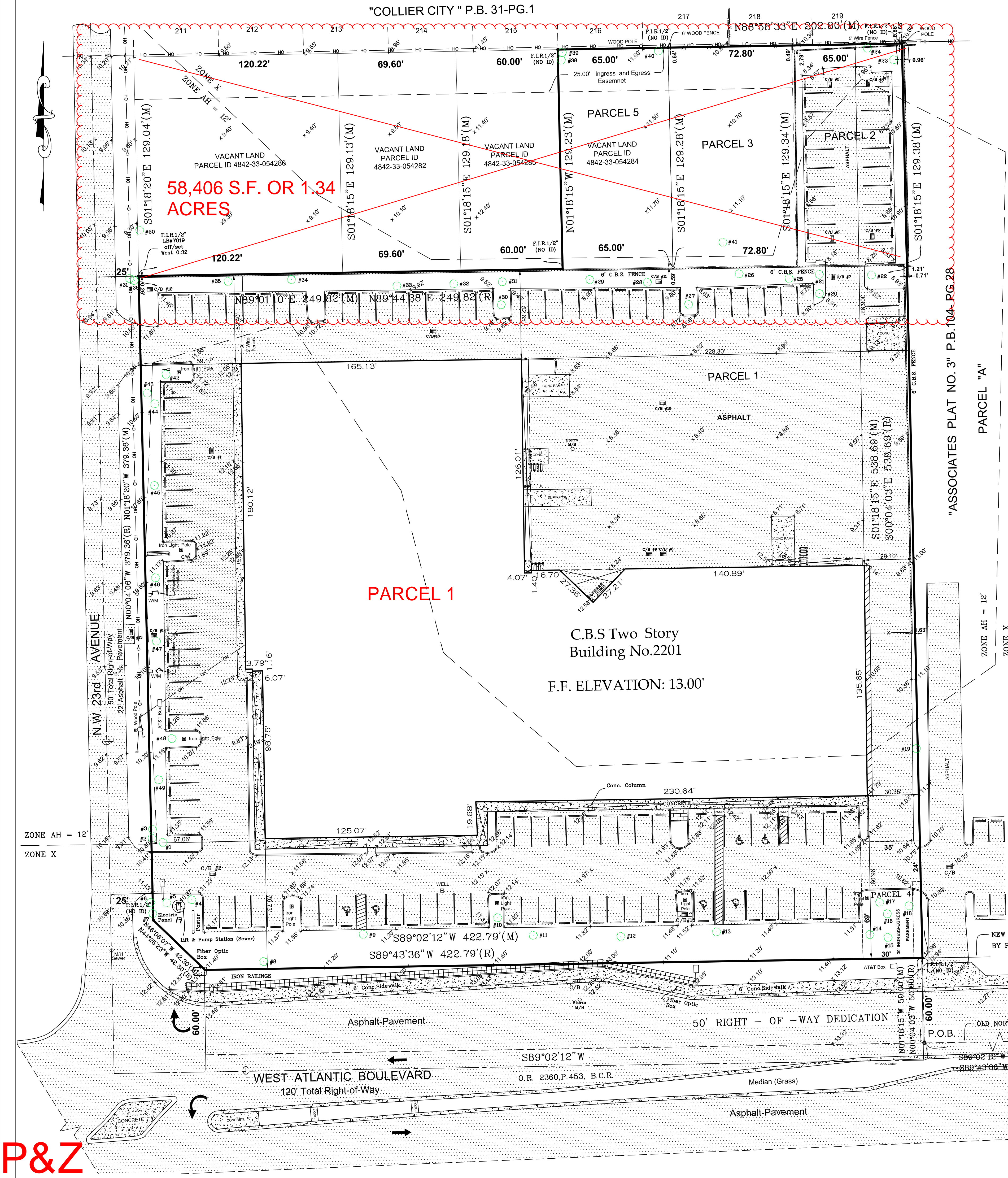
SUFFIX: H

DATE: 08-11-2021

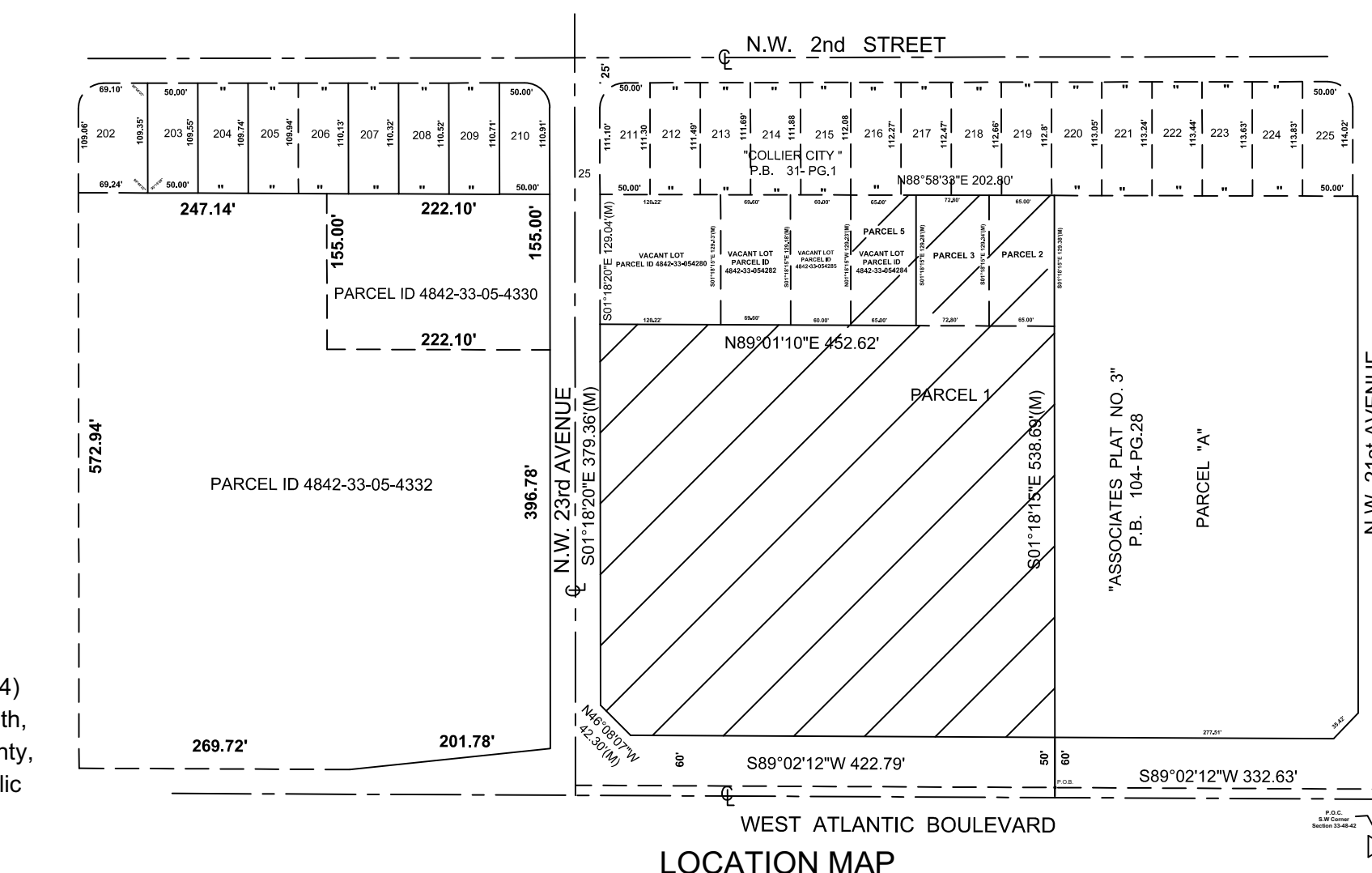
DRAWN BY: M.R

SHEET 1

OF 1



I hereby certify that this survey meets the standards of Practice as set forth by the Florida Board of Surveyors and Mappers in Chapter 5J-17.052 Florida Administrative Code, pursuant to section 472.027, Florida Statutes and is true and correct to the best of my knowledge and belief.  
NOT VALID UNLESS SEALED AND EMBOSSED WITH SURVEYOR'S SEAL  
Date of field work: 02-15-2021



CATCH BASIN TABULATION			
No.	Rim Elevation	Bottom Elevation Drainage Structure	Elevation Invert Pipe
1	11.19'	5.37'	Diameter 1.0' South 7.19'
2	11.30'	5.84'	Diameter 1.0' North 7.30' Diameter 1.0' East 7.30'
3	7.58'	4.86'	Diameter 1.0' East 5.72' Diameter 1.0' South 5.72'
4	7.57'	5.69'	Diameter 1.0' West 5.52' Diameter 1.0' South 5.52'
5	7.58'	4.78'	Diameter 1.0' North 5.59' Diameter 1.0' West 5.59'
6	7.63'	6.05'	Diameter 1.0' North 5.63' Diameter 1.0' East 5.63' Diameter 1.0' West
7	8.33'	5.05'	Diameter 1.0' North 6.38'
8	8.03'	5.11'	Diameter 2.0' South 5.60'
9	8.16'	5.12'	Diameter 2.0' South 5.66' Diameter 1.0' North Diameter 1.0' East
10	8.19'	5.40'	Diameter 1.0' North 6.0' Diameter 1.0' East 6.0' Diameter 2.0' South 5.40'
11	8.36'	5.36'	Diameter 1.0' East 5.77' Diameter 1.0' South 5.76' Diameter 2.0' West 4.12'
12	10.90'	5.84'	Diameter 2.0' East 7.08' Diameter 2.0' South 7.54'
13	8.81'	6.24'	Diameter 0.50' East 6.81' Diameter 1.0' West 6.45'
14	10.76'	4.66'	Diameter 2.0' North 5.0' Diameter 1.0' East 6.24'
15	11.40'	5.30'	Diameter 1.0' West 7.32' Diameter 1.0' East 7.32'
16	9.70'	3.85'	Diameter 1.0' West 5.73'

TREE TABULATION				
No.	NAME	TRUCK (DIAMETER)	CAPONY (DIAMETER)	HEIGHT
1	Cabbage Palmetto	0.85'	6'	20'
2	Cabbage Palmetto	0.95'	6'	16'
3	Cabbage Palmetto	1.10'	6'	20'
4	Oak Palmetto	0.55'	10'	10'
5	Cabbage Palmetto	0.80'	6'	18'
6	Cabbage Palmetto	0.85'	6'	18'
7	Cabbage Palmetto	0.95'	6'	18'
8	Oak Palmetto	0.60'	13'	15'
9	Swietenia Mahogoni	1.30'	18'	20'
10	Oak Palmetto	0.70'	18'	12'
11	Swietenia Mahogoni	0.45'	8'	8'
12	Oak	0.80'	15'	10'
13	Swietenia Mahogoni	0.80'	13'	15'
14	Cabbage Palmetto	0.70'	6'	10'
15	Cabbage Palmetto	0.95'	6'	20'
16	Cabbage Palmetto	0.95'	6'	16'
17	Oak Palmetto	0.60'	11'	12'
18	Swietenia Mahogoni	0.65'	12'	12'
19	Swietenia Mahogoni	1.70'	35'	25'
20	Oak	0.45'	8'	10'
21	Oak	0.40'	8'	10'
22	Oak	0.30'	6'	8'
23	Cabbage Palmetto	1.10'	12'	12'
24	Cabbage Palmetto	1.15'	12'	14'
25	Oak Palmetto	0.70'	12'	14'
26	Oak Palmetto	1.80'	0.40'	25'
27	Oak Palmetto	0.35'	7'	8'
28	Swietenia Mahogoni	0.85'	20'	12'
29	Oak	0.70'	12'	10'
30	Swietenia Mahogoni	0.85'	10'	12'
31	Swietenia Mahogoni	0.75'	12'	12'
32	Swietenia Mahogoni	0.80'	14'	12'
33	Oak	0.80'	18'	14'
34	Swietenia Mahogoni (Group)	0.80'	14'	12'
35	Swietenia Mahogoni	2.70'	45'	24'
36	Cabbage Palmetto	0.95'	6'	14'
37	Cabbage Palmetto	0.95'	6'	12'
38	Strangler Fig (Group)	0.80'-1.40'	5'	12'
39	Cabbage Palmetto	0.90'	6'	12'
40	Cabbage Palmetto	1.40'	8'	12'
41	Swietenia Mahogoni	1.0'	40'	28'
42	Cabbage Palmetto	0.1'	6'	31'
43	Cabbage Palmetto	1.15'	6'	16'
44	Swietenia Mahogoni	2.30'	20'	22'
45	Swietenia Mahogoni	2.0'	26'	23'
46	Swietenia Mahogoni	0.60'	9'	12'
47	Swietenia Mahogoni	0.90'	14'	10'
48	Swietenia Mahogoni	0.65'	8'	10'
49	Swietenia Mahogoni	0.95'	14'	12'
50	Swietenia Mahogoni	0.90'	6'	8'

**Karl F. Kuhn**  
Professional Surveyor and Mapper # 5953  
State of Florida.